

NK  
5500  
.546  
c.2  
CHM

Spink and sons  
A selection of Chinese carv





NK  
5500  
546  
C.2  
CHM



Established 1772.

A  
Selection  
of  
CHINESE  
CARVINGS

*On view at*

SPINK & SON'S GALLERIES

5, 6 & 7, KING STREET, ST JAMES'S.

LONDON, S.W.1.

**I**N response to numerous requests we have gathered together in these pages a little representative collection of Chinese carvings prior to the 19th Century.

Two out of the ten series now touched upon,—jade and lacquer,—have been previously dealt with in separate brochures. As, however, none of the present objects has been illustrated before we feel sure that whatever may be lost by this collective treatment will be more than regained in the opportunity presented of comparing the one series with the other and seeing how, though expressed in materials differing as widely as jade and ivory, lapis-lazuli and amber, that divine spark which animated all those old masters burns undimmed, whatever the medium employed.

And what an atmosphere of quiet restfulness and lasting pleasure such true Art brings in these days of stress and change.



1. Pagoda, the roofs in green lacquer. Very fine and extremely rare, *Height 4 ft. 10 ins.*  
KIEN-LUNG 1736-1795.

£275.

7035



2. Box with dragon decoration all over. From the Erskine Collection.  
*Diam. 11 ins. Depth 8½ ins*  
KIEN-LUNG 1736-1795.  
£37.



3. Box in dull red and green with floral panels on sides of lid and bottom. Rare.  
*Diam. 9 ins.*  
MING 1368-1643.  
£45.



4. Box, the sides decorated with floral panels on a diapered ground.  
*Length 8 ins., Depth 4 ins.*  
KIEN-LUNG 1736-1795.  
£38.



5. Dish, boldly carved in deep red. Dated and extremely rare.  
*Diam. 10 ins.*  
WAN-LI 1573-1619.  
**£95.**



6. Pair of Jardinières of exceptional technique, fitted with brass liners for use as table centres.  
*Length 12½ ins. Depth 5 ins.*  
 KIEN-LUNG 1736-1795.  
**£130.**



7 Box, brilliantly carved on lead with children at play round sides as well as top. Superb quality.  
*Diam. 5½ in. Depth 2¾ in.*  
 KIEN-LUNG 1736-1795.  
**£75.**



8 Box, of fine quality. The decoration is continued down the sides.  
*Diam. 3½ ins.*  
 MING 1368-1643.  
**£15.**



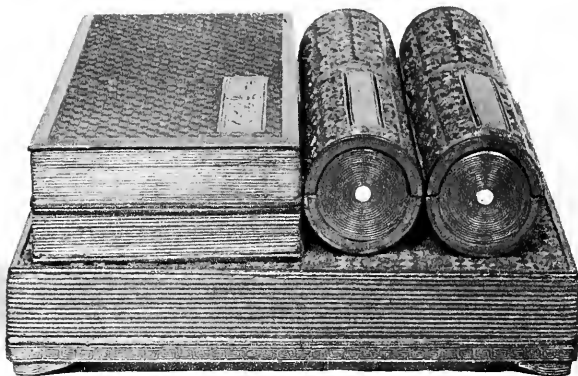


9. Pair of boxes of first importance, with a figure and  
landscape panel on each lid.  
*Diam. 15 ins. Total height 16½ ins.*  
KIEN-LUNG 1736-1795.

£225.



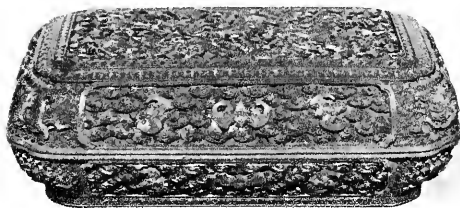
10. Box, boldly carved with wave pattern on sides. *Diam. 7 ins.,  
Depth 2 $\frac{3}{4}$  ins.*  
KIEN-LUNG 1736-1795.  
£35



11. Box, of very unusual form representing three books and two rolls. Dated on lid, and of fine quality. *8 ins. square, 3 ins. deep.*  
KIEN-LUNG 1736-1795.  
£45.



12. Box, deeply carved in rich red.  
*Diam. 6½ ins. Depth 5 ins.*  
KIEN-LUNG 1736-1795.  
£16.



13. Box, with dragon panel on lid. *Length 8 ins. Depth 2¾ ins.*  
KIEN-LUNG 1736-1795.  
£30.



14. Bowl and cover in three colours, the handle set with a jade plaque. Unusual.  
*Diam. 6 ins. Height 2¾ ins.*  
KIEN-LUNG 1736-1795.  
£18



15. Pair of picnic boxes, the carved outer case enclosing a three-tier box of incised dark green lacquer with seven small boxes fitted into the top compartment. Supreme quality and extremely rare. *Height 10½ in. Width 8 ins.*

KIEN-LUNG 1736-1795.

£95.



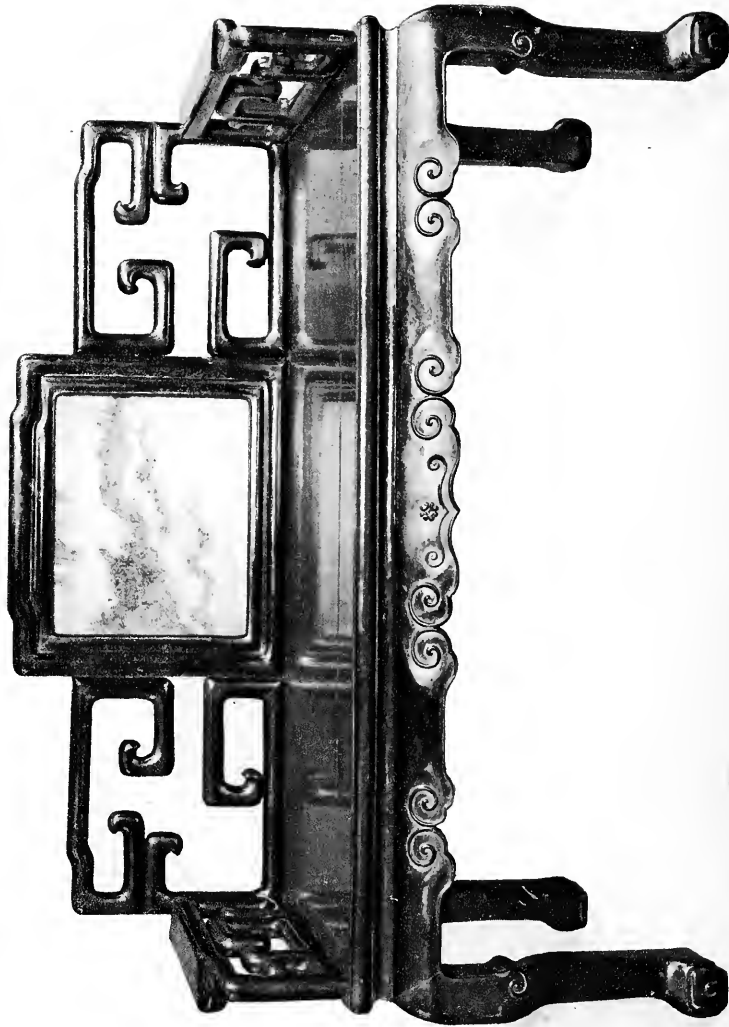
16. Landscape with numerous figures. Finely carved. On wood stand. *Height 12 ins.*  
KIEN-LUNG 1736-1795.  
£30.



17. Seated figure of a Lama lacquered in brown and gold. Fine portrait and rare. *Height 7½ ins.*  
KIEN-LUNG 1736-1795.  
£18



18. Brown wood figure of a deified Emperor seated on a red lacquer throne. *Height 7½ ins.*  
KIEN-LUNG 1736-1795.  
£15.



19. Dark rosewood settee of superb technique and in perfect condition. The back inlaid with a plaque of sepioid veined marble. *Width 4 ft. 6 in. Depth 1 ft. 10 ins.*  
MING 1568-1643.  
**£125.**



20. Figure of an Immortal holding a fly-whisk. Fine rich brown colour. Height 11 ins. KIEN-LUNG 1736-1795. £12.



21. Figure of an Immortal holding the peach of longevity. Exquisite work. Height 10 ins. KIEN-LUNG 1736-1795. £25.



23. Group of a sage and demon. On wood stand. Fine quality. *Height 9½ ins.*  
KIEN-LUNG 1736-1795.  
£12.



22. Important pair of Buddhist saints in dark wood finely toned and polished by age. *Height 2 ft.* 17th Century.  
£90.





25. Pair of Vases exquisitely carved from a block of transparent honey amber.  
*Height 5 ins.*  
 KIEN-LUNG 1736-1795.  
**£75.**



26. A Sage, carrying various emblems, in rich brownish-red amber. On wood stand.  
*Height 4½ ins.*  
 KIEN-LUNG 1736-1795.  
**£25.**



27. Figure of SHOU-LAO, the Taoist immortal, holding the peach of longevity. Of a fine orange colour.  
*Height 4 ins.*  
 KIEN-LUNG 1736-1795.  
**£9.**



28. Snuff bottle, carved out of a piece of transparent red amber. On wood stand.  
*Height 3½ ins.*  
 KIEN-LUNG 1736-1795.  
**£22.**



29. Vase, in rich translucent mottled green, a very unusual colour. Height 9 ins. KIEN-LUNG 1736-1795.  
£35



30. Lion, boldly carved in yellowish-green. Height 7½ ins. MING 1368-1643.  
£37.



31. Group of nine animals carved in pale yellow tinged with red. On wood stand. Height 7 ins. KHANG-H'SI 1662-1722.  
£27.



32. Animal, carved from a block of onion-green mottled with brown. The prototype of this very rare piece is evidently that Han Jade monster illustrated in colour opposite page 311 in Laufer's "jade." (Field Museum, Boston.)

*Length 6 ins. Height 4½ ins.*

SUNG 960-1279 or earlier.

£95.



33. Seal, of great importance, conferred by the Emperor on the military plenipotentiary sent to subdue the Province of Sinkiang. This rare seal is ascribed to the Yuan Period although the inscriptions on the sides are later additions.  
*6 ins. square, Height 6½ ins.*  
YUAN 1279-1368.

£125.



35 Cream coloured figure of the Goddess of Mercy with delicately engraved robes. Fitted as a boudoir lamp with shade in plain soft green silk.  
*Total height 13¾ ins.*  
KIEN-LUNG 1736-1795.  
£25.



36 Teapot, in mottled grey and red with traces of gilding in the panels  
*Height 4½ ins.*  
KIEN-LUNG 1736-1795.

£10.



37. The Opium-Eater, a wonderful piece of detailed carving.  
*Height 3½ ins.*  
KIEN-LUNG 1736-1795.  
£30.



38. Seated figure of an old man reading a book. Fine work.  
On wood stand.  
*Height 6 ins.*  
KIEN-LUNG 1736-1795.  
£12.



39. Woman and child, beautifully carved in light yellowish-brown.  
On wood stand.  
*Height 7½ ins.*  
KIEN-LUNG 1736-1795.  
£17.



40. Vase, of primary importance carved on both sides in very low relief. Pure Chinese style. *Height 12 ins.*  
KHANG-H'SI 1662-1722.  
**£250.**



41. Water-vessel, the body inlaid with an amalgam of matrix of turquoise and malachite. A Museum specimen and unique. *Length 5 ins.*  
KIEN-LUNG 1736-1795.

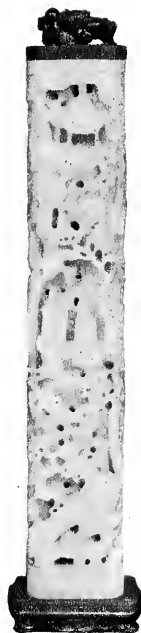
£75.



42 Pair of sweet-meat boxes with applied decoration in emerald green jade and other stones, the borders inlaid with rubies. Exquisite work.  
*Length 5½ ins.*

KIEN-LUNG 1736-1795.

£65.



43 Incense burner carved all over in openwork with the lid and base in rich green. Rare.

*Height 12 ins.*  
*2 ins. square*

KIEN-LUNG 1736-1795.

£85.



44. Transparent white group  
of dignified simplicity.  
*Height 6½ ins.*  
KIEN-LUNG 1736-1795.  
£47.



45. Dish in rich green, the  
back carved with a bold inter-  
laced rectangular design.  
Supreme quality. From  
the Summer Palace, Pekin. 1860.  
*Diam. 8¼ ins.*  
KIEN-LUNG 1736-1795  
£150



46. Incense burner, of extra-  
ordinary thinness in pale trans-  
lucent green. Superb work.  
*Height 5 ins. Diam. over  
handles 6¾ ins.*  
KIEN-LUNG 1736-1795  
£75.





47. Bowl of unique size and quality carved from a single block of pale grey jade. On contemporary wood stand. *Diam. 14 $\frac{3}{8}$  ins. Height on stand 8 $\frac{1}{2}$  ins.*  
KHANG-H'SI 1662-1722.

£550.



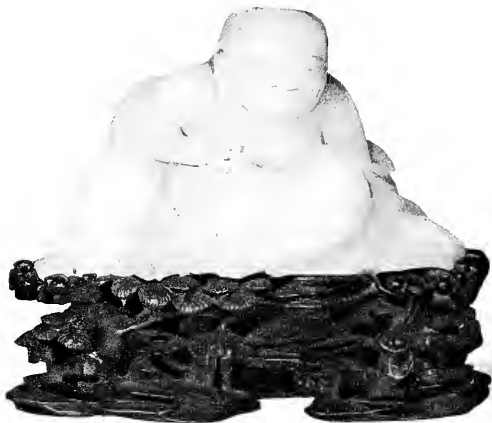
48. Vase in rich spinach green, carved entirely from one piece.  
*Length 9½ ins.*  
 KIEN-LUNG 1736-1795.  
**£35.**



49. Pair of table screens, the backs carved with cranes, stag and fir trees, the three Taoist emblems of longevity.  
*Height 12¾ ins Width 5 ins.*  
 KIEN-LUNG 1736-1795.  
**£75**



50. Table screen of archaic design, the back decorated in seed pattern. *Diam. 3¼ ins.*  
 KIEN-LUNG 1736-1795.  
**£15.**



51. Sage, accompanied by the three-legged toad of immortality, carved in brilliant white. Very fine quality. *Height 5 ins.*  
KIEN-LUNG 1736-1795.  
**£45.**



52. Horse, carved in rich olive green. A very unusual colour. *Height 6 1/2 ins.*  
KIEN-LUNG 1736-1795.  
**£150.**



53. Important one-piece carving in translucent *verie legume* of superb quality. A Museum specimen. Height 12 ins.  
KHANG-H'SI 1662-1722.

£195.



54. Wine vessel in greyish-white jade boldly carved on both sides. Fine quality.  
*Height 6½ ins.*  
 MING 1368-1643.  
**£45.**



55. Vase, splashed with orange and supported on three elephant head feet with two hydra round the shoulder.  
*Height 6 ins.*  
 MING 1368-1643.  
**£25.**



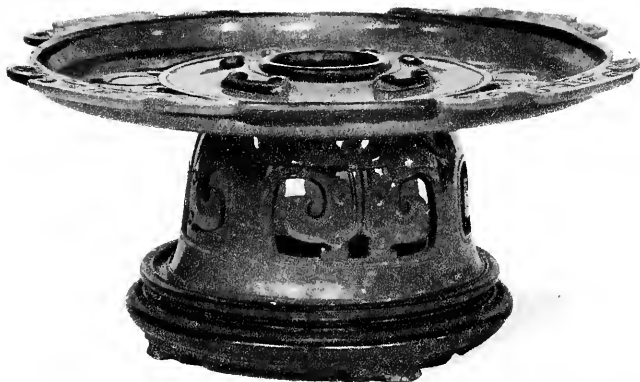
56. Incense burner of rich spinach green colour, decorated in low relief.  
*Height 5 ins.*  
 KIEN-LUNG 1736-1795.  
**£95.**



57. Group of fine quality in greenish white. *Height 6½ ins.*  
KIEN-LUNG 1736-1795.  
**£35.**



58. Kylene, in yellowish-green jade. A bold carving finely finished. *Height 6 ins.*  
KIEN-LUNG 1736-1795.  
**£35.**



59. Openwork dish and stand in translucent grey-green. A very unusual form.  
*Height*  $2\frac{1}{2}$  *ins.* *Diam.*  $5\frac{1}{2}$  *ins.*  
 KIEN-LUNG 1736-1795.  
**£32.**



60. Jewelled group of the Buddha and two attendants. On wood stand inlaid with silver. Rare Sino-Tibetan work.  
*Height*  $9$  *ins.*  
 KHANG-H'SI 1662-1722.  
**£90.**



61. Pale grey figure of Kwan-yin, the Goddess of Mercy, mounted as a lamp. *Height of figure*  $11$  *inches.*  
 KIEN-LUNG 1736-1795.  
**£110.**



62. Bowl, the body decorated with the eight  
Buddhistic symbols of Happy Augury, and  
the domed foot with a repeated  
character. *Diam.  $\frac{3}{4}$  ins.*  
KIEN-LUNG 1736-1795.  
**£35.**



63 Vase, of a rich trans-  
lucent green splashed  
with cream. A Museum  
specimen of very rare  
colouring.  
*Height 7 ins.*  
KIEN-LUNG 1736-1795  
**£75.**



64 Libation cup, carved  
in fine olive green, and  
dated in seal char-  
acters. *Height  $\frac{3}{4}$  in.*  
KIEN-LUNG 1736-1795.  
**£37.**





65. Buffalo, in mottled grey jade. A strong carving of great size. *Length* 11½ ins.  
MING 1368-1643.  
**£425.**



66. Double vase, carved from one piece of olive green jade.  
 Height  $5\frac{1}{2}$  ins.  
 KIEN-LUNG 1736-1795.  
 £45.



67. Vase, mottled over the entire surface with brilliant translucent emerald green. A superb specimen of great rarity. On wood stand inlaid with silver.  
 Height 7 ins.  
 KIEN-LUNG 1736-1795.  
 £175.



68. Vase, carved with animals in low relief on both sides, and splashed with the finest emerald green.  
 Height  $7\frac{1}{2}$  ins.  
 KIEN-LUNG 1736-1795.  
 £145.



69. Vase, of important size, carved from a single block of dark green jade. *Height 15 ins.*  
KIEN-LUNG 1736-1795.

£175.



70. Seated Immortal holding  
the peach of longevity.  
*Height 3½ ins.*  
KHANG-H'SI 1662-1722.  
£18



71 SHOU-LAO, seated by  
a rock. A large and  
important carving.  
*Height 11½ ins.*  
MING 1368-1643.  
£80.



72 Wall-vase, of excep-  
tional quality, the base  
stained green and carv-  
ed to represent a  
stand. *Height 9 ins.*  
KHANG-H'SI 1662-1722  
£35.



73. Seated figure of an Emperor. An imposing carving with fine patina. From the Erskine Collection.

*Height 5½ ins.*  
MING 1368-1643.

**£24.**



74. Figure of a lady, finely finished and of rich colour. On wood stand. Height  $9\frac{1}{2}$  in. MING 1368-1643. £22.



75. A palace attendant holding an open book. Rare. Height  $4\frac{1}{2}$  in. MING 1368-1643. £12.



76 Seated goddess, of fine technique and colour. Height  $5\frac{1}{2}$  ins. MING 1368-1643. £17.



77. Figure of a Sage, carefully carved and of important size.  
*Height 12 ins.*  
KHANG-H'SI 1662-1722.  
£22.



78. Standing Buddhist saint, a bold and simple carving.  
*Height 11½ ins.*  
KHANG-H'SI 1662-1722.  
£35.



79. Landscape of finest quality, carved from one piece. *Height 8 ins.*  
KIEN-LUNG 1736-1795  
**£40.**





80. Unique carving of a sage standing vis-à-vis the toad of immortality. This extraordinary specimen is carved from the twin horns of a rhinoceros. On contemporary wood stand.  
*Height 18½ ins.*  
KHANG-H'SI 1662-1722.

£65.



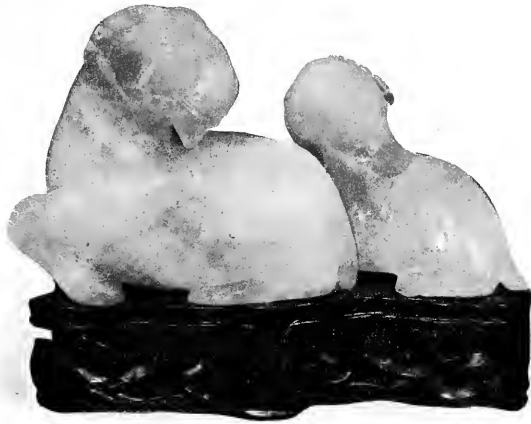
81 Cup, minutely and finely carved with a continuous landscape.  
*Height 6½ ins.*  
KIEN-LUNG 1736-1795  
£35.



82 Cup, with bold decoration of animals in high relief. A very unusual subject.  
*Height 3½ ins.*  
KIEN-LUNG 1736-1795.  
£20.



83. Rock-crystal Vase, of superb quality and carved from one piece. On wood stand. *Height 12½ ins.*  
KIEN-LUNG 1736-1795.  
**£225.**



84. Pink crystal group of two goats. Very charming and of beautiful colour. On wood stand. *Height 4½ ins.*  
KIEN-LUNG 1736-1795.  
**£18.**



85. Agate Kylin, carved from a single block of fine semi-translucent brown colour. A bold and strong carving. *Height 7½ ins.*  
KIEN-LUNG 1736-1795.  
**£75.**



86. Red and green jasper vase, unique in size and quality. The red portion forming the body is covered on either side with dark green foliage boldly carved in high relief. *From the Collection of Sir William Bennett K.C.V.O. Height 10 ins.*  
KIEN-LUNG 1736-1795.  
**£375.**



87. Amethyst incense burner  
and cover of fine translucent  
colour. *Height 3½ ins.*  
KIEN-LUNG 1736-1795.  
£25.



88. Tray, carved from a single piece of matrix  
of turquoise of a fine blue-green. On  
wood stand. Very rare. *From the  
Collection of Sir Arthur Bigbold*  
*Length 6½ ins.*  
KHANG-H'SI 1662-1722.  
£60.



89. Agate Vase, of first importance with four loose ring handles round the shoulder. The whole carved from one piece of soft brown colour.

*Height 13½ ins.*

KIEN-LUNG 1736-1795

**£175.**



90. Lapis-lazuli incense burner  
and cover. On wood stand.  
*Height 4½ ins.*  
KIEN-LUNG 1736-1795.  
£27.



91. Lapis-lazuli vase, of an  
archaic bronze design. Rich  
colour all over. *Height 6½ ins.*  
KIEN-LUNG 1736-1795.  
£84



92. Rock-crystal vase, of important size, carved from one block of unusual clearness and quality. On wood stand. *Height 15½ ins.*  
KIEN-LUNG 1736-1795.  
£250.





93. Bowl, of a brilliant transparent red colour, boldly carved with flowers. Rare. *Diam.* 7½ ins.  
KIEN-LUNG 1736-1795.  
£42.



94. Vase, strongly carved in rich red on a white ground. *Height* 7½ ins.  
KIEN-LUNG 1736-1795.  
£22.



95. Vase, with coral red foliage on a yellow ground. *Height* 10¼ ins.  
KIEN-LUNG 1736-1795.  
£25.



96. Grey-stone figure of Kwan-yin standing on a lotus throne flanked by two lions. The inscription bears the date 1468 A.D. although the figure itself may be considerably earlier.  
*Height 16½ ins.*  
MING or earlier.

£45



97. Black-stone lion with a loose pellet in its jaws. An unusually strong and simple carving. *Height 5 ins.*  
MING 1368-1643.

£45.



98. Stone Tablet commemorating the birth of a son. Inscribed and dated *circa 1,000 A.D.* Very rare. *Height 12 ins.*  
SUNG 960-1279.

£35.



99. Small stone head of the Buddha,  
fine work.  
TANG 618-906.  
£17.



100. Marble figure of a goddess. A  
carving full of quiet dignity.  
*Height 8 ins.*  
MING 1368-1643.  
£18.

*The prices given in this brochure in all cases include cost of packing, insurance and carriage to any part of the world.*

*In the event of any article not giving complete satisfaction we are at all times ready to refund the purchase money in full.*

*Copies of this brochure, also photographs and further particulars of any item therein, sent on request.*

## SPINK & SON, LTD.

*Established 1772.*

*By Appointment to H.M. The King.*

5, 6 & 7, KING STREET, ST. JAMES'S,  
LONDON, S.W.1.

And at 16, 17 & 18, Piccadilly, W.1.

Telephone:  
5337 GERRARD.

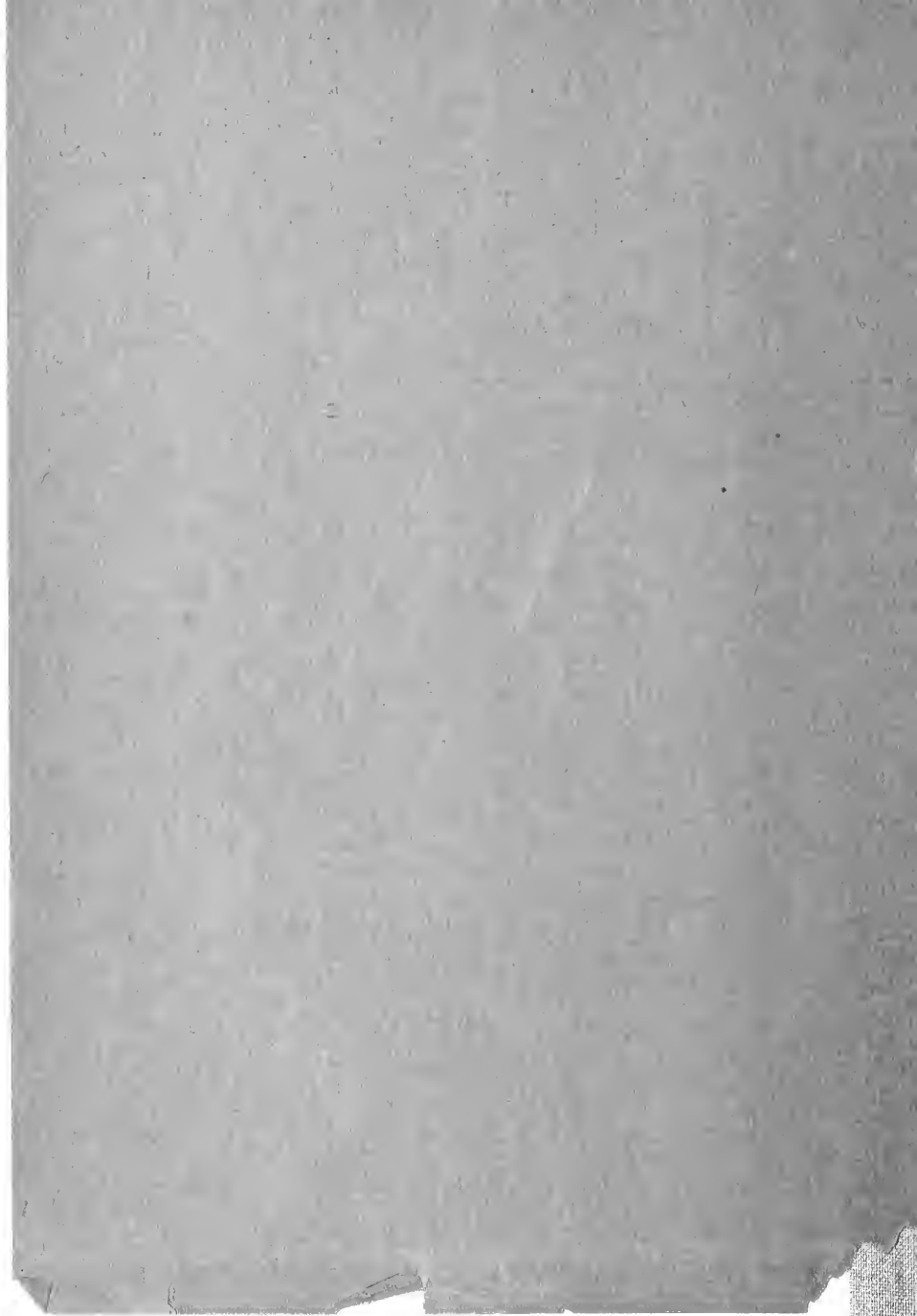
Cables:  
JADEITE, LONDON.

COPYRIGHT.



Established 1772

*Presented*  
*with the compliments*  
*of*  
*Spink & Son, Ltd.*







SMITHSONIAN INSTITUTION LIBRARIES



3 9088 00629 1207